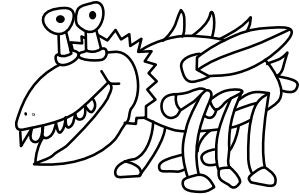


15:04 Text2COM

Silver Jubilee Edition, specially re-mastered for PoC||GTFO
by Saumil Shah (@therealsaumil),
with special help from Mr. Udayan Shah



```
START:
MOV     SI,FILE      ; Start of Text File
PUSH   CS
POP     DS           ; Set Data Segment = Code Segment

CLEAR:
MOV     AH,06        ; Scroll Up Window
XOR     AL,AL        ; 0 = Clear Screen
MOV     BH,07        ; White over Black
XOR     CX,CX        ; Start at 0,0
MOV     DH,18        ; row 22
MOV     DL,4F        ; column 79
INT     10           ; Video Services

MOV     AH,02        ; Set Cursor Position
XOR     DX,DX        ; 0,0
XOR     BH,BH        ; Page number 0
INT     10           ; Video Services

WRITECHAR:
LODSB                      ; AL = [DS:SI]
MOV     DL,AL              ; DL = character to write
NOT     AL                  ; 1's Complement
XOR     AL,E5              ; E5 = 1's C (EOF)
JZ      END                ; If EOF character, jump to END
MOV     AH,02              ; Write Character
INT     21                 ; DOS Services

MOV     AH,03              ; Get Cursor Position
XOR     BH,BH              ; Page 0
INT     10                 ; Video Services. DH,DL = Row,Col

CMP     DH,16              ; Is row 22?
JLE     WRITECHAR         ; Jump if < 22 to WRITECHAR

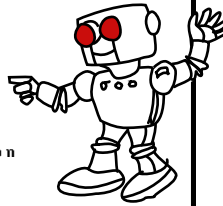
MOV     AH,09              ; Write $-Terminated String
MOV     DX,PAGER           ; Address of Pager String
INT     21                 ; DOS Services

MOV     AH,0B              ; Read Single Character
INT     21                 ; DOS Services
JMP     CLEAR              ; Jump to CLEAR

END:
INT     20

PAGER:
DB      '[Text2COM by Saumil Shah (c)1992] '
DB      'Press Any Key... $'

FILE:
; Text content goes here.
```



Text2COM generates self-displaying README.COM files by prefixing a short sequence of DOS Assembly instructions before a text file. The resultant file is an MS-DOS .COM program which can be executed directly from the command prompt.

The Text2COM code displays the contents of the appended file page by page.

Text2COM's executable code is created by MS-DOS's DEBUG program.

Then take any text file and concatenate it with README.BIN and store the resultant file as README.COM:

```
C:\>copy README.BIN+TEXT2COM.TXT README.COM
```

You now have a self-displaying README.COM file!

```
C:\>debug
-n README.BIN
-e 100 BE 78 01 0E 1F B4 06 30 C0 B7 07 31 C9 B6 18 B2
-e 110 4F CD 10 B4 02 31 D2 30 FF CD 10 AC 88 C2 F6 D0
-e 120 34 E5 74 1C B4 02 CD 21 B4 03 30 FF CD 10 80 FE
-e 130 16 7E E8 B4 09 BA 42 01 CD 21 B4 08 CD 21 EB C5
-e 140 CD 20 5B 54 65 78 74 32 43 4F 4D 20 62 79 20 53
-e 150 61 75 6D 69 6C 20 53 68 61 68 20 28 63 29 20 31
-e 160 39 39 32 5D 20 50 72 65 73 73 20 41 6E 79 20 4B
-e 170 65 79 2E 2E 2E 20 24 0A
-r cx
CX 0000
:78
-w
Writing 00078 bytes
-q
```

